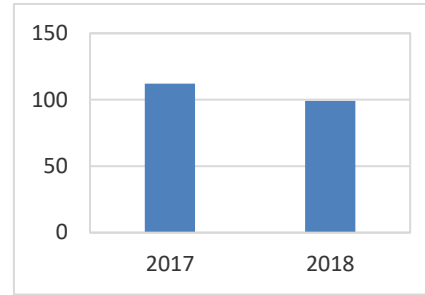
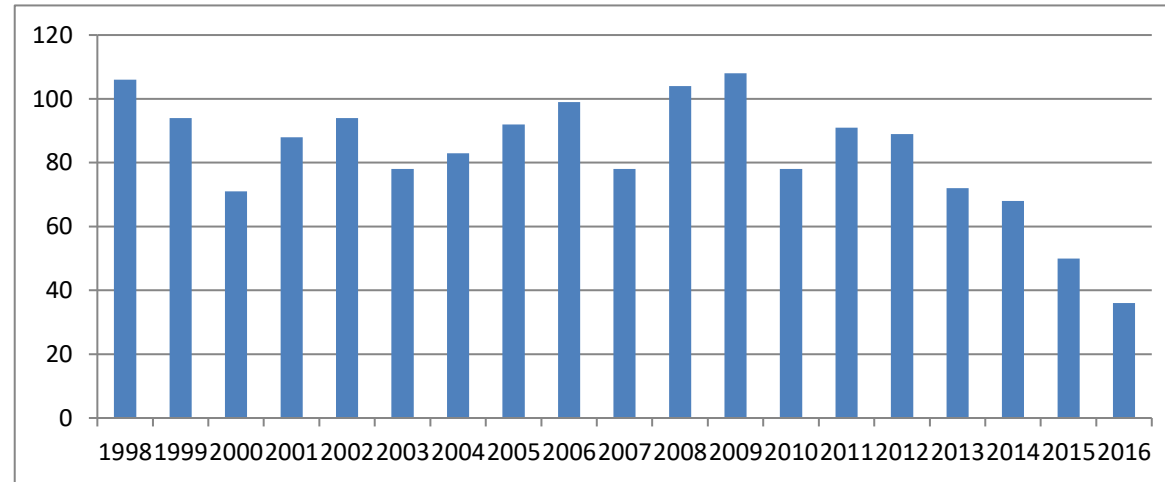


Race	Yr	Finished	DE-PA* Members	% of DNP
Fireside				
Frostbite 5				
Miler	2017	1013	891	112 12.6%
	2018	867	835	99 11.9%



Race	Yr	Finished	DE-PA* Members	% of DNP
Caesar				
Rodney Half				
Mar. (since 1994)	1998	1010	899	106 11.8%
	1999	973	850	94 11.1%
	2000	1033	875	71 8.1%
	2001	1000	878	88 10.0%
	2002	1105	1011	94 9.3%
	2003	1035	913	78 8.5%
	2004	1170	1010	83 8.2%
	2005	1023	873	92 10.5%
	2006	1192	1002	99 9.9%
	2007	1186	979	78 8.0%
	2008	1231	1047	104 9.9%
	2009	1418	1173	108 9.2%
	2010	1496	1135	78 6.9%
	2011	1314	1069	91 8.5%
	2012	1406	1144	89 7.8%
	2013	1430	1191	72 6.0%
	2014	1119	942	68 7.2%
	2015	831	682	50 7.3%
	2016	612	513	36 7.0%

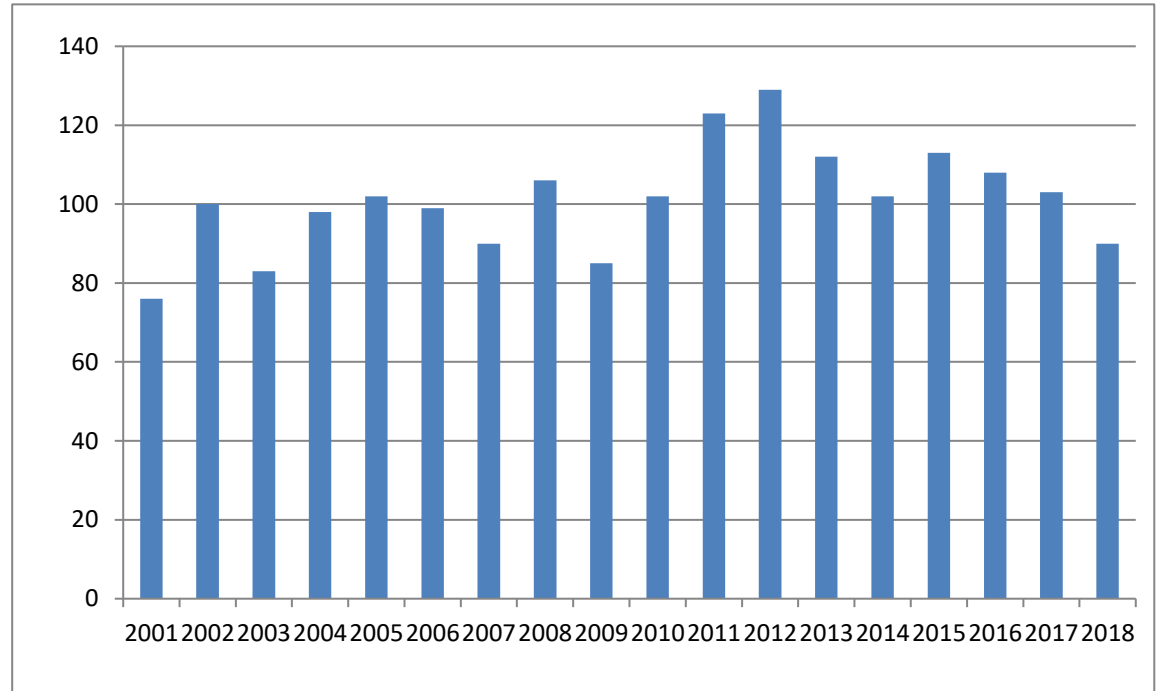


**Bancroft
Neurohealth**

5K (2001-05)	2001	616	575	76	13.2%
	2002	632	607	100	16.5%
	2003	610	594	83	14.0%
	2004	582	550	98	17.8%
	2005	590	166	102	61.4%

Adrenaline

5K (since 2006)	2006	468	115	99	86.1%
	2007	374	129	90	69.8%
	2008	623	190	106	55.8%
	2009	601	147	85	57.8%
	2010	724	165	102	61.8%
	2011	847	189	123	65.1%
	2012	922	203	129	63.5%
	2013	885	189	112	59.3%
	2014	916	188	102	54.3%
	2015	892	177	113	63.8%
	2016	922	178	108	60.7%
	2017	878	190	103	54.2%
	2018	942	179	90	50.3%

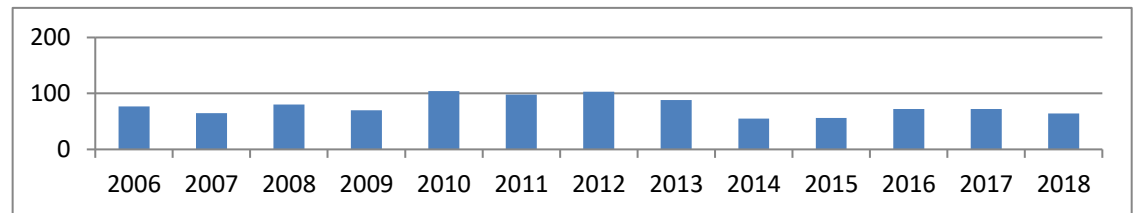


Penn Relays

20K	1998	421	399	88	22.1%
(1991-95, 97-03)	1999	441	425	89	20.9%
	2000	410	393	73	18.6%
	2001	405	384	90	23.4%
	2002	369	350	75	21.4%
	2003	274	264	68	25.8%

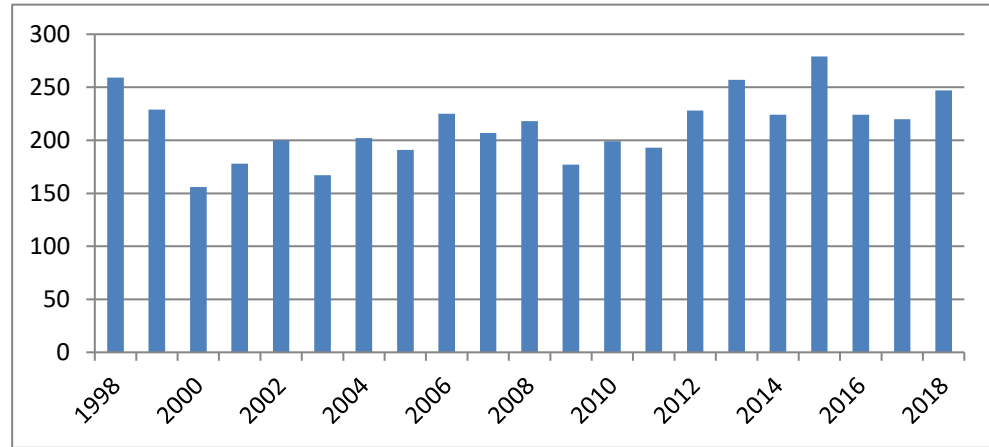
Valley Forge

Revolut. 5					
miler	2006	977	921	77	8.4%
(since 2006)	2007	921	858	65	7.6%
	2008	1074	999	80	8.0%
	2009	1067	1004	70	7.0%
	2010	1182	1127	104	9.2%
	2011	1163	1103	98	8.9%
	2012	1045	924	103	11.1%
	2013	943	882	88	10.0%
	2014	838	754	55	7.3%
	2015	814	763	56	7.3%
	2016	962	898	72	8.0%
	2017	978	913	72	7.9%
	2018	972	907	64	7.1%

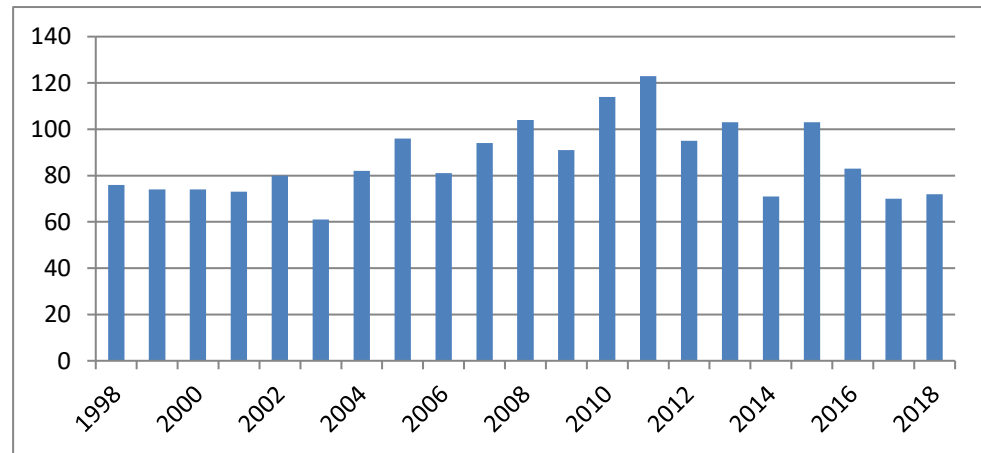


**Broad Street
Run 10 miler
(since 1991)**

1998	5870	5433	259	4.8%
1999	6470	5989	229	3.8%
2000	6682	6108	156	2.6%
2001	7166	6611	178	2.7%
2002	8688	7902	200	2.5%
2003	9073	8188	167	2.0%
2004	10682	9555	202	2.1%
2005	12040	9233	191	2.1%
2006	13583	10419	225	2.2%
2007	15791	11979	207	1.7%
2008	19173	14613	218	1.5%
2009	23194	17490	177	1.0%
2010	26169	20093	199	1.0%
2011	25206	19482	193	1.0%
2012	34049	24507	228	0.9%
2013	32024	24695	257	1.0%
2014	35173	27088	224	0.8%
2015	35857	27598	279	1.0%
2016	34444	26236	224	0.9%
2017	36968	28163	220	0.8%
2018	36220	27800	247	0.9%



Phila. Bar					
10K (91-98)	1998	546	528	81	15.3%
Schuylkill					
River 5K					
(97-99)	1998	390	376	76	20.2%
	1999	234	231	68	29.4%
Law					
Enforcement					
Unity 5K	2001	479	468	47	10.0%
(01-03)	2002	303	292	56	19.2%
	2003	358	344	44	12.8%
Moorestown					
Rotary 8K	1998	590	568	76	13.4%
(since 1995)	1999	620	609	74	12.2%
	2000	675	648	74	11.4%
	2001	491	472	73	15.5%
	2002	655	627	80	12.8%
	2003	562	534	61	11.4%
	2004	510	495	82	16.6%
	2005	571	155	96	61.9%
	2006	608	141	81	57.4%
	2007	651	152	94	61.8%
	2008	732	167	104	62.3%
	2009	777	220	91	41.4%
	2010	821	220	114	51.8%
	2011	848	218	123	56.4%
	2012	868	196	95	48.5%
	2013	872	187	103	55.1%
	2014	734	140	71	50.7%
	2015	835	174	103	59.2%
	2016	828	176	83	47.2%
	2017	827	136	70	51.5%
	2018	788	156	72	46.2%
St Anthony's					
5K	2000	258	224	37	16.5%
Capitol 5000					
	2002	224	217	37	17.1%
	2003	255	248	36	14.5%



Stone Harbor

Lions 10K	1999	1001	860	67	7.8%
(since 1999)	2000	1039	933	48	5.1%
	2001	745	687	59	8.6%
	2002	548	453	63	13.9%
	2003	556	483	54	11.2%
	2004	475	390	64	16.4%
	2005	439	245	79	32.2%
	2006	304	178	58	32.6%
	2007	337	163	61	37.4%
	2008	304	170	62	36.5%
	2009	333	199	70	35.2%

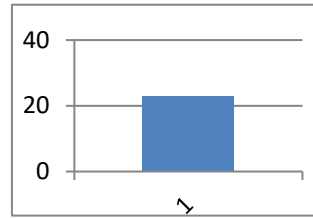
Hands-On-House Half Marathon	2017	209	185	23	12.4%
-------------------------------------	------	-----	-----	----	-------

Main Line Run 5K	(since 2018)	2018	280	135	64	47.4%
-------------------------	--------------	------	-----	-----	----	-------

Phila. Distance Run

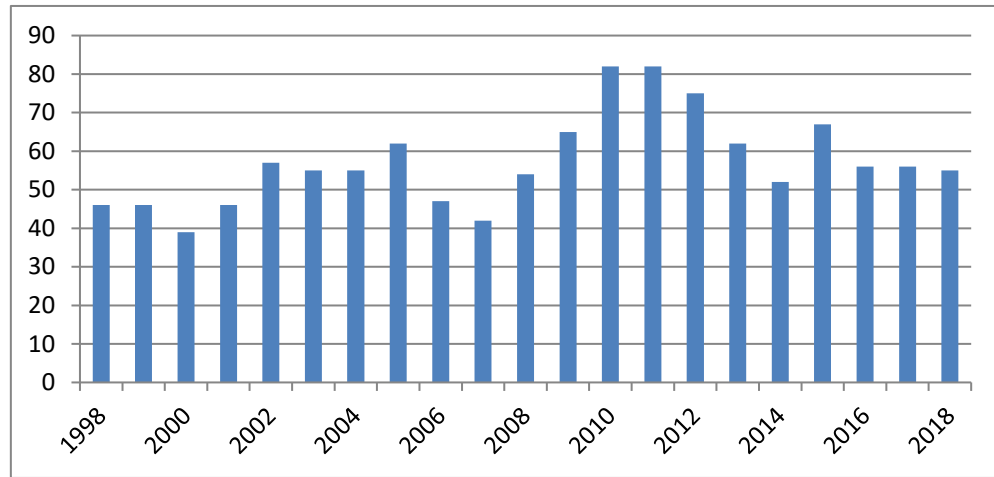
HMar	1998	6247	4706	482	10.2%
(1991-2000)	1999	6312	4867	228	4.7%
	2000	6416	4918	160	3.3%

Parkway Run 5K	2002	742	719	69	9.6%
	2004	927	886	68	7.7%
	2005	1202	958	90	9.4%
	2006	1199	1007	77	7.6%



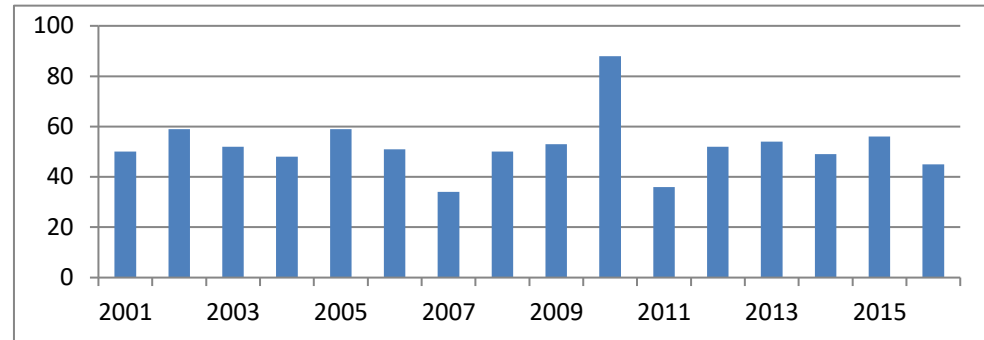
Del. Distance

Year	Del. Distance	Del. Distance	Del. Distance	Del. Distance
1998	132	125	46	36.8%
1999	164	150	46	30.7%
2000	198	185	39	21.1%
2001	223	194	46	23.7%
2002	252	229	57	24.9%
2003	238	226	55	24.3%
2004	282	262	55	21.0%
2005	239	205	62	30.2%
2006	236	212	47	22.2%
2007	181	160	42	26.3%
2008	248	218	54	24.8%
2009	268	227	65	28.6%
2010	297	264	82	31.1%
2011	348	???	82	
2012	355	315	75	23.8%
2013	330	291	62	21.3%
2014	273	258	52	20.2%
2015	265	223	67	30.0%
2016	175	160	56	35.0%
2017	191	175	56	32.0%
2018	168	148	55	37.2%



Radnor Run

5 Miles	2001	479	473	50	10.6%
(since 2002)	2002	483	476	59	12.4%
	2003	485	485	52	10.7%
	2004	489	478	48	10.0%
	2005	438	426	59	13.8%
	2006	406	395	51	12.9%
	2007	338	302	34	11.3%
	2008	453	444	50	11.3%
	2009	521	494	53	10.7%
	2010	688	525	88	16.8%



69 w/o state -
weather
caused
reschd to
same day as

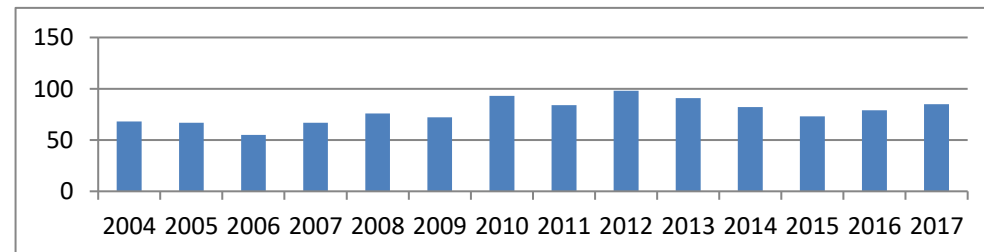
Bridge Run	2011	463	394	36	9.1%
	2012	386	338	52	15.4%
	2013	457	360	54	15.0%
	2014	436	406	49	12.1%
	2015	369		56	
	2016	402	318	45	14.2%

Zoo Run for

Wildlife 10K	1998	3446	3256	174	5.3%
(1997-2001)	1999	3704	3448	115	3.3%
	2000	3810	3574	98	2.7%

Ben Franklin

Bridge 10K	2004	752	732	68	9.3%
(since 2004)	2005	1342	547	67	12.2%
	2006	1754	694	55	7.9%
	2007	2000	748	67	9.0%
	2008	2269	874	76	8.7%
	2009	2289	958	72	7.5%
	2010	3268	1448	93	6.4%

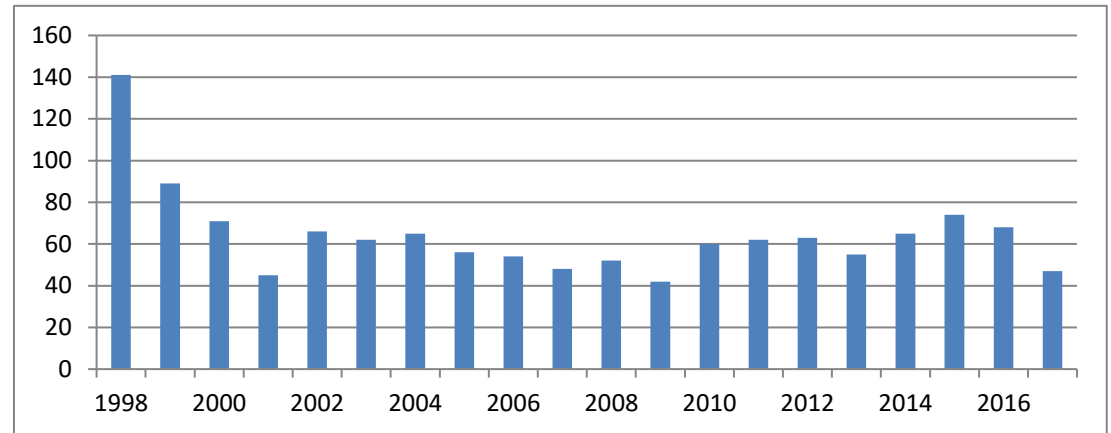


see Bridge
Run note
above

	2011	3030	1342	84	6.3%
	2012	3263	1383	98	7.1%
	2013	3401	1387	91	6.6%
	2014	2867	1207	82	6.8%
	2015	2269	906	73	8.1%
	2016	2652	1014	79	7.8%
	2017	2382	868	85	9.8%

Philadelphia

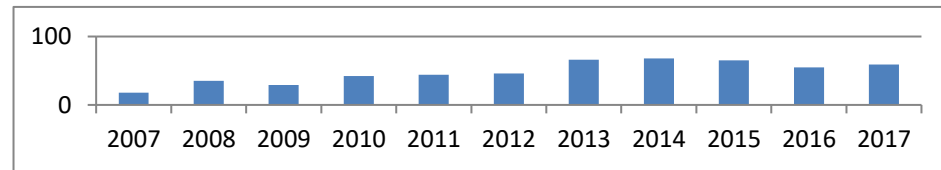
Marathon (since 1997)	Year	Participants	Runners	Triathletes	Total	%
	1998	3294	1361	141	10.4%	
	1999	3684	1512	89	5.9%	
	2000	4271	1839	71	3.9%	
	2001	3919	1751	45	2.6%	
	2002	4486	1884	66	3.5%	
	2003	5261	2169	62	2.9%	
	2004	6055	2311	65	2.8%	
	2005	5864	1975	56	2.8%	
	2006	5936	1920	54	2.8%	
	2007	6793	1852	48	2.6%	
	2008	7231	2331	52	2.2%	
	2009	7468	2269	42	1.9%	
	2010	8942	3187	60	1.9%	
	2011	10268	3633	62	1.7%	
	2012	11579	3580	63	1.8%	
	2013	10890	3983	55	1.4%	
	2014	10361	3618	65	1.8%	
	2015	9161	3312	74	2.2%	
	2016	8989	3219	68	2.1%	
	2017	7789	2911	47	1.6%	



Phila

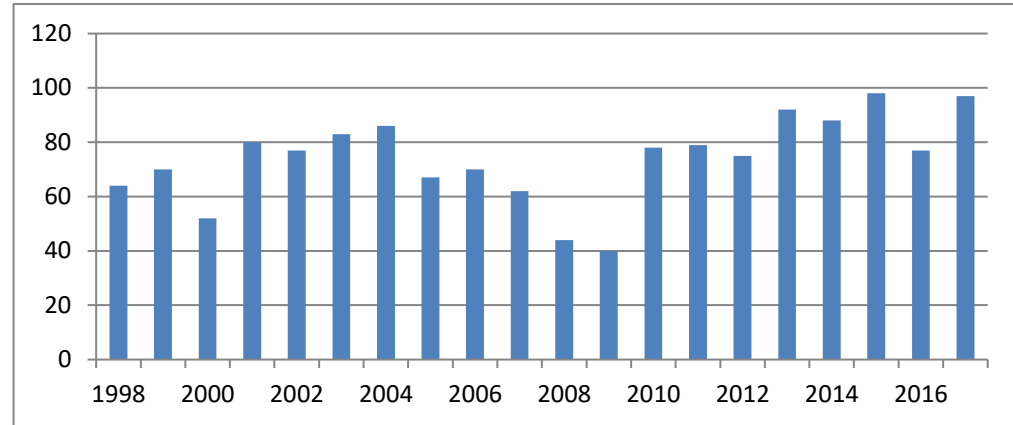
Marathon 1/2

Marathon (since 2007)	Year	Participants	Runners	Triathletes	Total	%
	2007	4269	1709	18	1.1%	
	2008	5184	2117	35	1.7%	
	2009	7189	2965	29	1.0%	
	2010	8395	3963	42	1.1%	
	2011	9398	4625	44	1.0%	
	2012	10951	5469	46	0.8%	
	2013	12465	6372	66	1.0%	
	2014	12794	6495	68	1.0%	
	2015	10903	5517	65	1.2%	
	2016	10522	5788	55	1.0%	
	2017	10024	5820	59	1.0%	



**Rothman
Institute 8K
(since 1997)**

1998	813	581	64	11.0%
1999	874	649	70	10.8%
2000	760	565	52	9.2%
2001	1059	811	80	9.9%
2002	1422	1069	77	7.2%
2003	1287	960	83	8.6%
2004	1342	941	86	9.1%
2005	1594	930	67	7.2%
2006	1443	872	70	8.0%
2007	1285	691	62	9.0%
2008	1444	753	44	5.8%
2009	1572	860	40	4.7%
2010	1648	1068	78	7.3%
2011	1491	953	79	8.3%
2012	1889	1240	75	6.0%
2013	1609	1064	92	8.6%
2014	1699	1180	88	7.5%
2015	1992	1281	98	7.7%
2016	2339	1521	77	5.1%
2017	2571	1644	97	5.9%



*Included southern NJ before 2005,
2005 & subsequent total includes NJ

