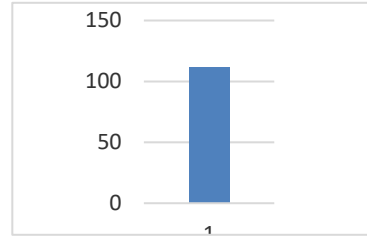
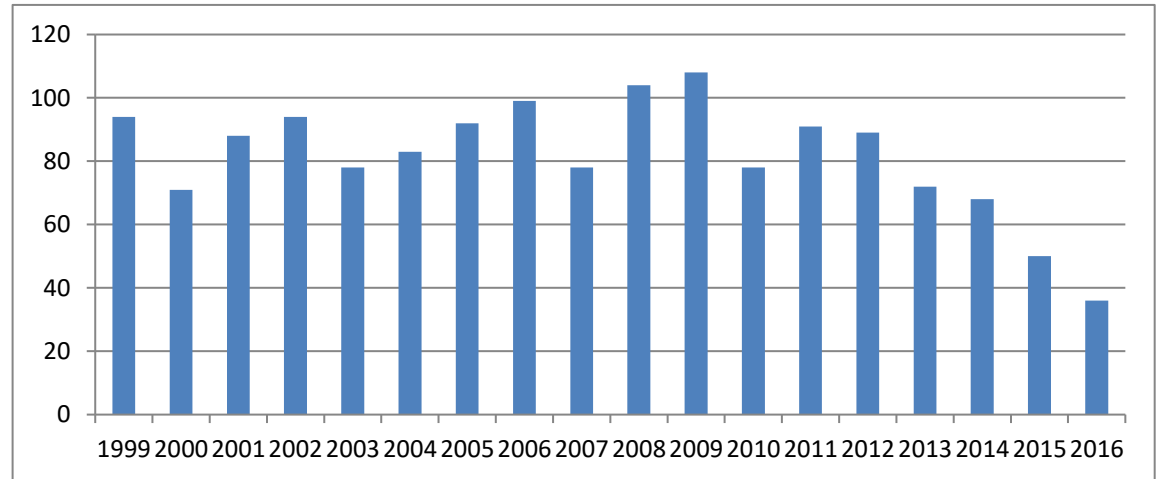


Race	Yr	Finished	DE-PA*	Members	% of DNP
Fireside					
Frostbite 5					
Miler	2017	1013	891	112	12.6%



**Caesar
Rodney Half
Mar.
(since 1994)**

1998	1010	899	106	11.8%
1999	973	850	94	11.1%
2000	1033	875	71	8.1%
2001	1000	878	88	10.0%
2002	1105	1011	94	9.3%
2003	1035	913	78	8.5%
2004	1170	1010	83	8.2%
2005	1023	873	92	10.5%
2006	1192	1002	99	9.9%
2007	1186	979	78	8.0%
2008	1231	1047	104	9.9%
2009	1418	1173	108	9.2%
2010	1496	1135	78	6.9%
2011	1314	1069	91	8.5%
2012	1406	1144	89	7.8%
2013	1430	1191	72	6.0%
2014	1119	942	68	7.2%
2015	831	682	50	7.3%
2016	612	513	36	7.0%

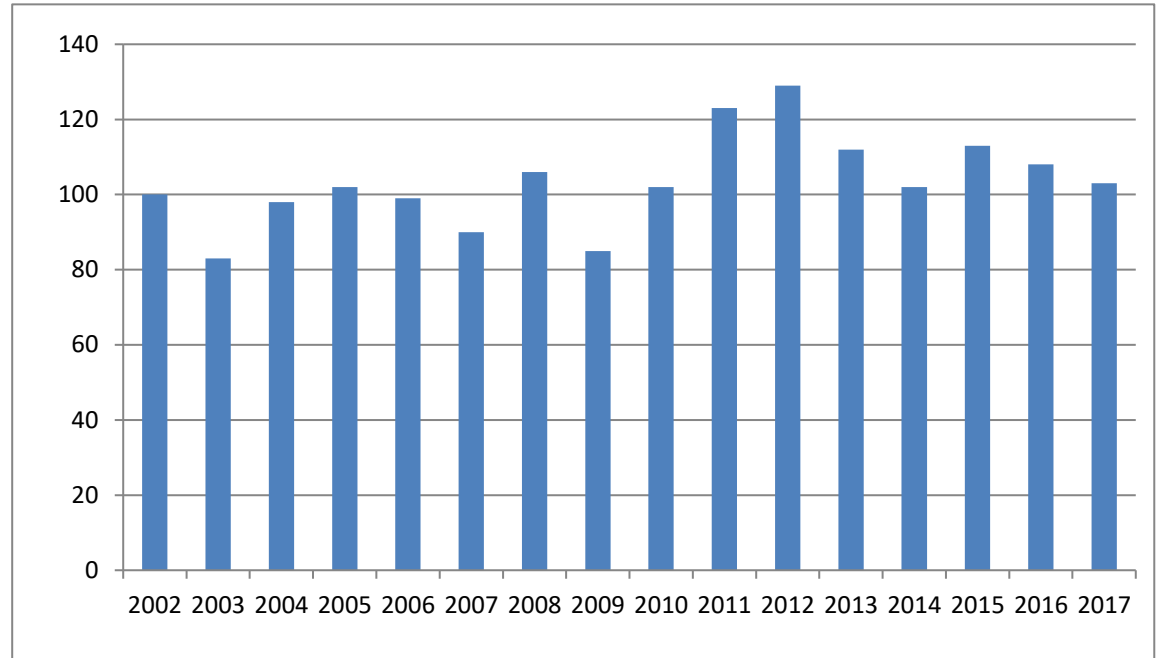


**Bancroft
Neurohealth**

5K (2001-05)	2001	616	575	76	13.2%
	2002	632	607	100	16.5%
	2003	610	594	83	14.0%
	2004	582	550	98	17.8%
	2005	590	166	102	61.4%

Adrenaline

5K (since 2006)	2006	468	115	99	86.1%
	2007	374	129	90	69.8%
	2008	623	190	106	55.8%
	2009	601	147	85	57.8%
	2010	724	165	102	61.8%
	2011	847	189	123	65.1%
	2012	922	203	129	63.5%
	2013	885	189	112	59.3%
	2014	916	188	102	54.3%
	2015	892	177	113	63.8%
	2016	922	178	108	60.7%
	2017	878	190	103	54.2%



Penn Relays

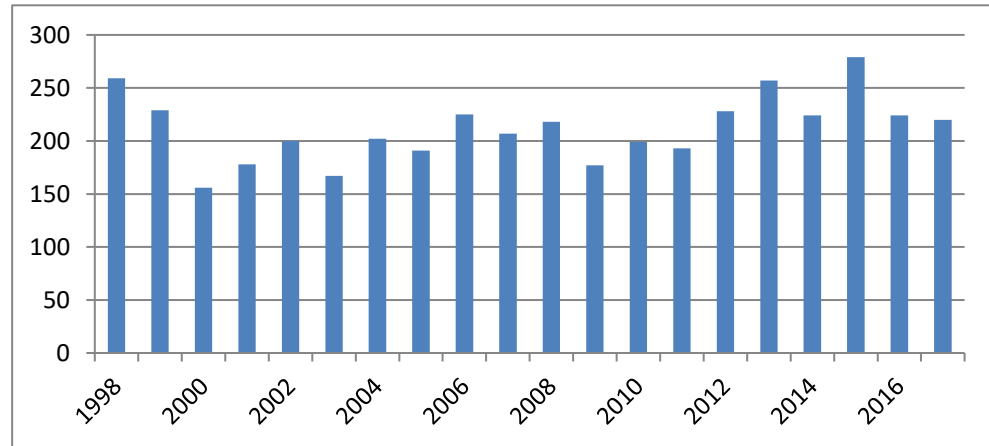
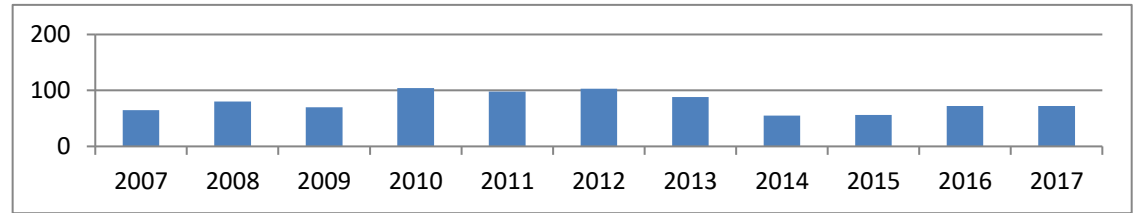
20K	1998	421	399	88	22.1%
(1991-95, 97-03)	1999	441	425	89	20.9%
	2000	410	393	73	18.6%
	2001	405	384	90	23.4%
	2002	369	350	75	21.4%
	2003	274	264	68	25.8%

**Valley Forge
Revolut. 5
miler**

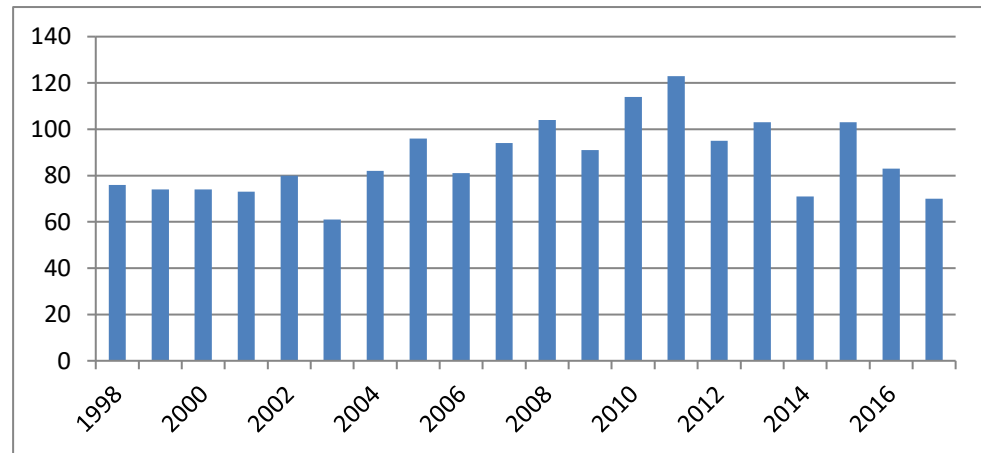
(since 2006)	2006	977	921	77	8.4%
	2007	921	858	65	7.6%
	2008	1074	999	80	8.0%
	2009	1067	1004	70	7.0%
	2010	1182	1127	104	9.2%
	2011	1163	1103	98	8.9%
	2012	1045	924	103	11.1%
	2013	943	882	88	10.0%
	2014	838	754	55	7.3%
	2015	814	763	56	7.3%
	2016	962	898	72	8.0%
	2017	978	913	72	7.9%

Broad Street

Run 10 miler	1998	5870	5433	259	4.8%
(since 1991)	1999	6470	5989	229	3.8%
	2000	6682	6108	156	2.6%
	2001	7166	6611	178	2.7%
	2002	8688	7902	200	2.5%
	2003	9073	8188	167	2.0%
	2004	10682	9555	202	2.1%
	2005	12040	9233	191	2.1%
	2006	13583	10419	225	2.2%
	2007	15791	11979	207	1.7%
	2008	19173	14613	218	1.5%
	2009	23194	17490	177	1.0%
	2010	26169	20093	199	1.0%
	2011	25206	19482	193	1.0%
	2012	34049	24507	228	0.9%
	2013	32024	24695	257	1.0%
	2014	35173	27088	224	0.8%
	2015	35857	27598	279	1.0%
	2016	34444	26236	224	0.9%
	2017	36968	28163	220	0.8%



Phila. Bar					
10K (91-98)	1998	546	528	81	15.3%
Schuylkill					
River 5K					
(97-99)	1998	390	376	76	20.2%
	1999	234	231	68	29.4%
Law					
Enforcement					
Unity 5K	2001	479	468	47	10.0%
(01-03)	2002	303	292	56	19.2%
	2003	358	344	44	12.8%
Moorestown					
Rotary 8K	1998	590	568	76	13.4%
(since 1995)	1999	620	609	74	12.2%
	2000	675	648	74	11.4%
	2001	491	472	73	15.5%
	2002	655	627	80	12.8%
	2003	562	534	61	11.4%
	2004	510	495	82	16.6%
	2005	571	155	96	61.9%
	2006	608	141	81	57.4%
	2007	651	152	94	61.8%
	2008	732	167	104	62.3%
	2009	777	220	91	41.4%
	2010	821	220	114	51.8%
	2011	848	218	123	56.4%
	2012	868	196	95	48.5%
	2013	872	187	103	55.1%
	2014	734	140	71	50.7%
	2015	835	174	103	59.2%
	2016	828	176	83	47.2%
	2017	827	136	70	51.5%
St Anthony's					
5K	2000	258	224	37	16.5%
Capitol 5000					
	2002	224	217	37	17.1%
	2003	255	248	36	14.5%



Stone Harbor

Lions 10K	1999	1001	860	67	7.8%
(since 1999)	2000	1039	933	48	5.1%
	2001	745	687	59	8.6%
	2002	548	453	63	13.9%
	2003	556	483	54	11.2%
	2004	475	390	64	16.4%
	2005	439	245	79	32.2%
	2006	304	178	58	32.6%
	2007	337	163	61	37.4%
	2008	304	170	62	36.5%
	2009	333	199	70	35.2%

Hands-On-House Half Marathon	2017	209	185	23	12.4%
-------------------------------------	------	-----	-----	----	-------

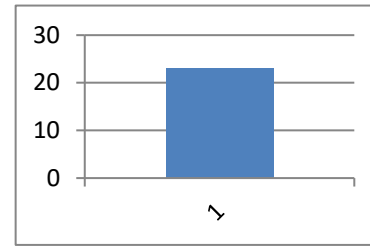
Phila.

Distance Run

HMar	1998	6247	4706	482	10.2%
(1991-2000)	1999	6312	4867	228	4.7%
	2000	6416	4918	160	3.3%

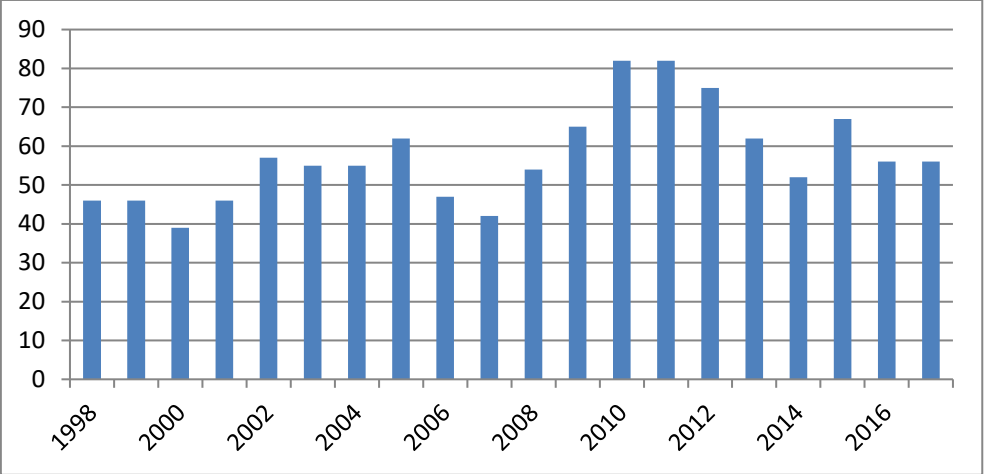
Parkway Run

5K	2002	742	719	69	9.6%
	2004	927	886	68	7.7%
	2005	1202	958	90	9.4%
	2006	1199	1007	77	7.6%



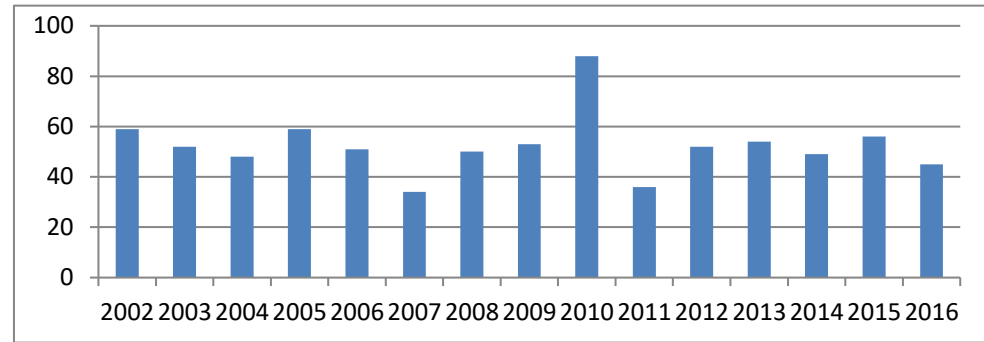
Del. Distance

Year	1998	1999	2000	2001	2002	2003	2004	2005	2006	2007	2008	2009	2010	2011	2012	2013	2014	2015	2016	2017
Classic 15K (91-93, since 1997)	132	164	198	223	252	238	282	239	236	181	248	268	297	348	355	330	273	265	175	191
	125	150	185	194	229	226	262	205	212	160	218	227	264	???	315	291	258	223	160	175
	46	46	39	46	57	55	55	62	47	42	54	65	82	82	75	62	52	67	56	56
	36.8%	30.7%	21.1%	23.7%	24.9%	24.3%	21.0%	30.2%	22.2%	26.3%	24.8%	28.6%	31.1%		23.8%	21.3%	20.2%	30.0%	35.0%	32.0%



Radnor Run

5 Miles	2001	479	473	50	10.6%
(since 2002)	2002	483	476	59	12.4%
	2003	485	485	52	10.7%
	2004	489	478	48	10.0%
	2005	438	426	59	13.8%
	2006	406	395	51	12.9%
	2007	338	302	34	11.3%
	2008	453	444	50	11.3%
	2009	521	494	53	10.7%
	2010	688	525	88	16.8%



69 w/o state -
weather
caused
reschd to
same day as

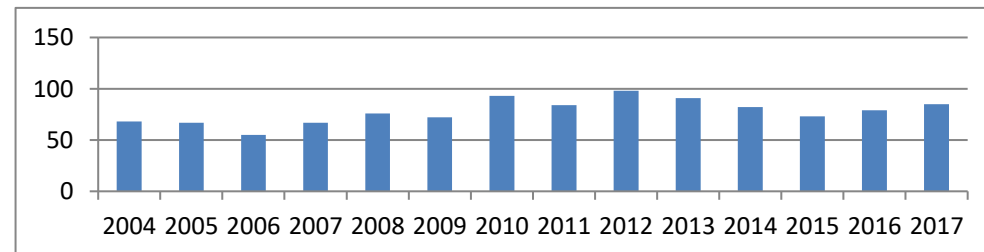
Bridge Run	2011	463	394	36	9.1%
	2012	386	338	52	15.4%
	2013	457	360	54	15.0%
	2014	436	406	49	12.1%
	2015	369		56	
	2016	402	318	45	14.2%

Zoo Run for

Wildlife 10K	1998	3446	3256	174	5.3%
(1997-2001)	1999	3704	3448	115	3.3%
	2000	3810	3574	98	2.7%

Ben Franklin

Bridge 10K	2004	752	732	68	9.3%
(since 2004)	2005	1342	547	67	12.2%
	2006	1754	694	55	7.9%
	2007	2000	748	67	9.0%
	2008	2269	874	76	8.7%
	2009	2289	958	72	7.5%
	2010	3268	1448	93	6.4%

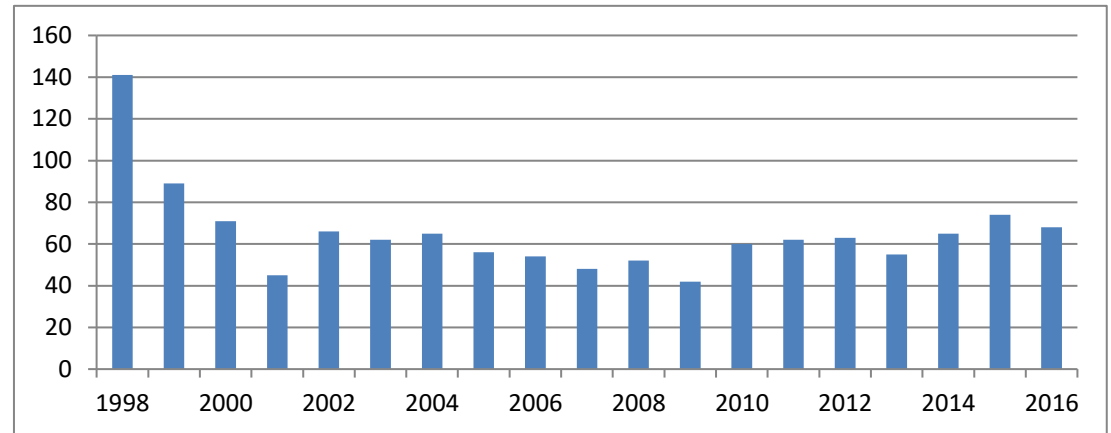


see Bridge
Run note
above

	2011	3030	1342	84	6.3%
	2012	3263	1383	98	7.1%
	2013	3401	1387	91	6.6%
	2014	2867	1207	82	6.8%
	2015	2269	906	73	8.1%
	2016	2652	1014	79	7.8%
	2017	2382	868	85	9.8%

Philadelphia

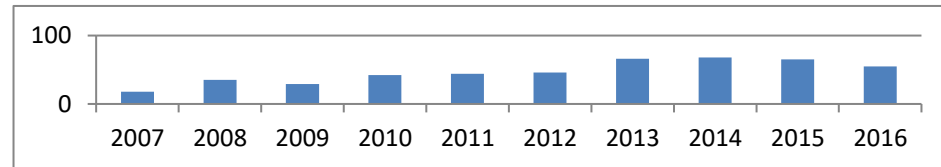
Marathon (since 1997)	Year	Participants	Runners	Volunteers	Percentage
	1998	3294	1361	141	10.4%
	1999	3684	1512	89	5.9%
	2000	4271	1839	71	3.9%
	2001	3919	1751	45	2.6%
	2002	4486	1884	66	3.5%
	2003	5261	2169	62	2.9%
	2004	6055	2311	65	2.8%
	2005	5864	1975	56	2.8%
	2006	5936	1920	54	2.8%
	2007	6793	1852	48	2.6%
	2008	7231	2331	52	2.2%
	2009	7468	2269	42	1.9%
	2010	8942	3187	60	1.9%
	2011	10268	3633	62	1.7%
	2012	11579	3580	63	1.8%
	2013	10890	3983	55	1.4%
	2014	10361	3618	65	1.8%
	2015	9161	3312	74	2.2%
	2016	8989	3219	68	2.1%



Phila

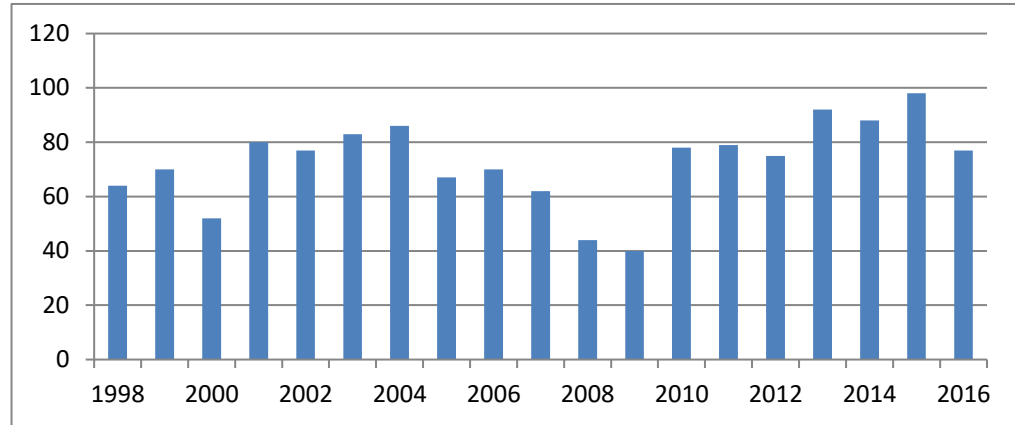
Marathon 1/2

Marathon (since 2007)	Year	Participants	Runners	Volunteers	Percentage
	2007	4269	1709	18	1.1%
	2008	5184	2117	35	1.7%
	2009	7189	2965	29	1.0%
	2010	8395	3963	42	1.1%
	2011	9398	4625	44	1.0%
	2012	10951	5469	46	0.8%
	2013	12465	6372	66	1.0%
	2014	12794	6495	68	1.0%
	2015	10903	5517	65	1.2%
	2016	10522	5788	55	1.0%



**Rothman
Institute 8K
(since 1997)**

1998	813	581	64	11.0%
1999	874	649	70	10.8%
2000	760	565	52	9.2%
2001	1059	811	80	9.9%
2002	1422	1069	77	7.2%
2003	1287	960	83	8.6%
2004	1342	941	86	9.1%
2005	1594	930	67	7.2%
2006	1443	872	70	8.0%
2007	1285	691	62	9.0%
2008	1444	753	44	5.8%
2009	1572	860	40	4.7%
2010	1648	1068	78	7.3%
2011	1491	953	79	8.3%
2012	1889	1240	75	6.0%
2013	1609	1064	92	8.6%
2014	1699	1180	88	7.5%
2015	1992	1281	98	7.7%
2016	2339	1521	77	5.1%



*Included southern NJ before 2005,
2005 & subsequent total includes NJ